

Gt

Take The A Train

Intro.

E+ D+ C+ C+ Bb+ Ab+

G+ G7^(#9)

Dr Fill

Vamp

C7

C7



A

C7

D7^(#11)

Dm7

G7

Em7

A7

Dm7

G7

C7

D7^(#11)

Dm7

G7

C

Gm7

C7

B F F

37 D7 Dm7 G7

C C7 D7^(#11)

45 Dm7 G7 *To Coda* $\text{\textcircled{C}}$

Vamp
C E+ D+ C+ C+B^{b+} A^{b+} G+ G7^(#9)

47

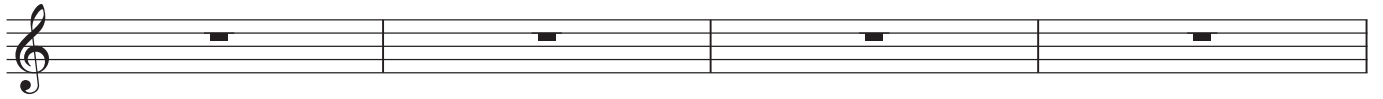
D C7 D7^(#11) Dm7 G7 Em7 A7 Dm7 G7

Solo ~ Open

61 C7 D7^(#11) Dm7 G7 C Gm7 C7

E

F F



Background
Last time in

D7 Dm7 G7



C7 D7^(#11)



Dm7 G7 C A7 Dm7 G7



D.S.

C E+ D+ C+ C+ Bb+ Ab+



G+ G7^(#9) C⁶₉



Dr Fill