

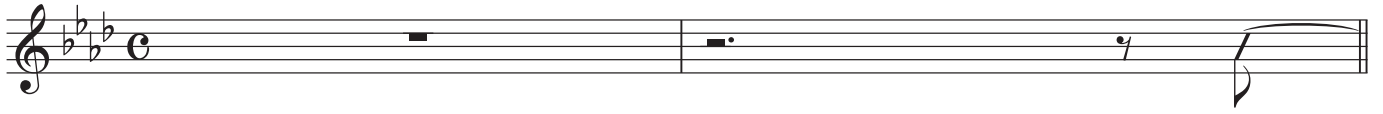
蜃気楼

Gt

Intro.

♩ = 48

A^bΔ7



A Repeat to Solo ~

E^bm9

E^bm9

Fm11₃

Gm11₃



C7

Fm9

Dm7(b5)

G7

CΔ7



D^bΔ7

G^bΔ7

Gm7(b5)

C7

FΔ7

Last theme Vo in ~



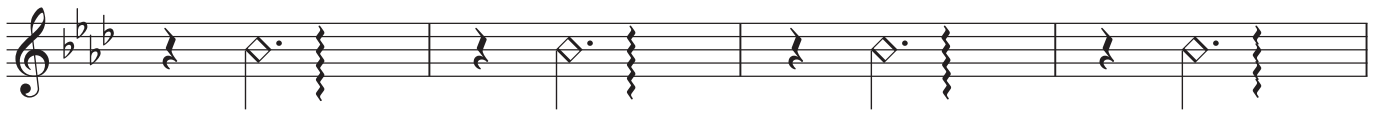
B

E^bΔ7

D^bΔ7

A^bm7

D^bΔ7



EΔ7

DΔ7

AΔ7

To Coda



A^bΔ7



A^bΔ7

