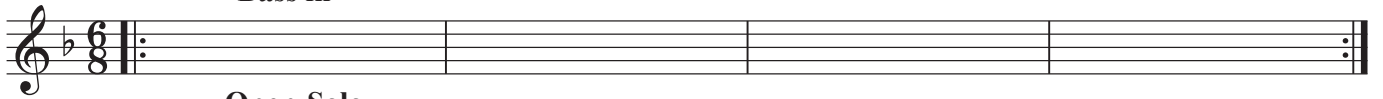


Tp

RAIN OF ISRAEL

Intro.

Dm7 Bass in ~



Open-Solo

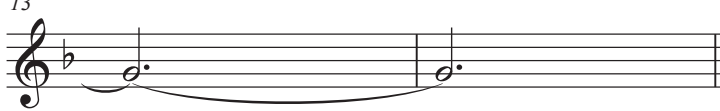
5 Dm7



9 Dm7



13 Cm7



A Dm7



19 A7 C#

Dm7



23 Dm7



27 A7 C# 2

Dm7



B Jazz waltz Swing

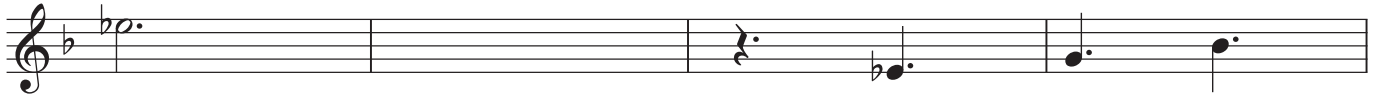
BbΔ7

F
A



35 AbΔ7

EbΔ7
G



39 $G\flat\Delta 7$ $Gm7$ Gm
 F $Em7(b5)$ $A7$

43 $D\Delta 7$ $G\Delta 7$

47 $D\Delta 7$ $G\Delta 7$ $E\flat\Delta 7$ *To Coda*

C Open-Solo

$Dm7$ $A7$
 $C\sharp$

**Background
in Las ttime**

57 $Dm7$ $Dm7$

63 $A7$
 $C\sharp$ $Dm7$

Jazz waltz Swing

67 $B\flat\Delta 7$ E
 A

71 $A\flat\Delta 7$ $E\flat\Delta 7$
 G

75 $G\flat\Delta 7$ $Gm7$ $Gm7$
 F $Em7(b5)$ $A7$

79 $D\Delta 7$ $G\Delta 7$

83 $D_{\Delta 7}$ $G_{\Delta 7}$ $E_{\flat\Delta 7}$

(Last time *mf* *mp*)

$DDm7$

91 $A7$ $C\#$ $Dm7$

95 $Dm7$

99 $A7$ $C\#$ 2 $Dm7$ $D.S.$

Ending $Dm7$

107 $Dm7$

111 $Dm7$

115 $Dm7$

119 $Dm7$