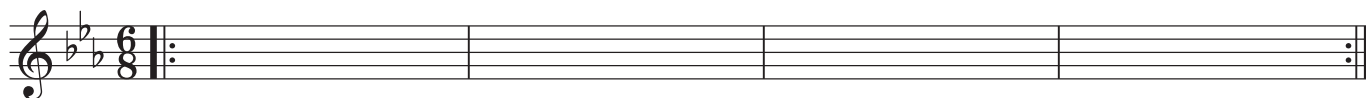


Gt

RAIN OF ISRAEL

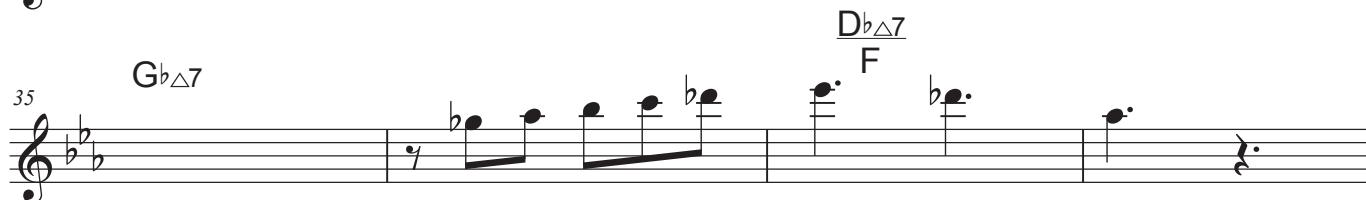
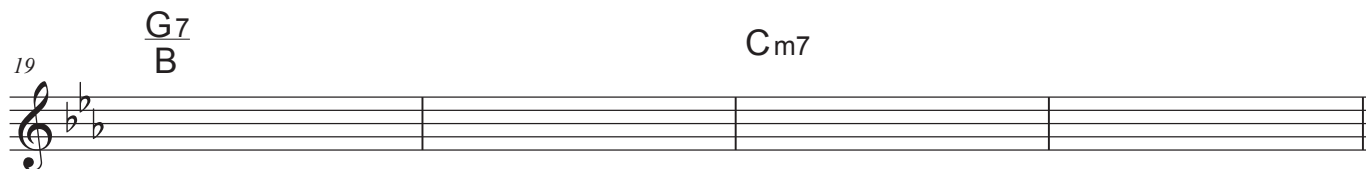
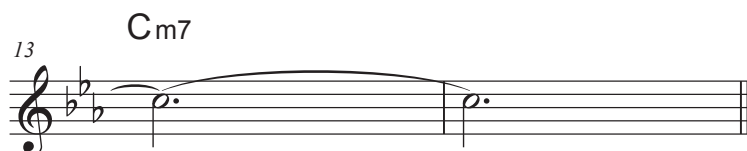
Intro. Bass in ~ Cm7



Open-Solo



On Que Vln in ~



39 E Δ 7 Fm7 Fm Eb Dm7(b5) G7

43 C Δ 7 F Δ 7

47 C Δ 7 F Δ 7 D \flat Δ 7 To Coda

C Open-Solo

Cm7 G7 B

57 Cm7 Cm7

63 G7 B Cm7

Jazz waltz Swing

67 A \flat Δ 7 E \flat G

71 G \flat Δ 7 D \flat Δ 7 F

75 E Δ 7 Fm7 Fm Eb Dm7(b5) G7

79 C Δ 7 F Δ 7

83 $C_{\Delta 7}$ $F_{\Delta 7}$ $D_{b\Delta 7}$

(Last time *mf* *mp*)

D $Cm7$

91 $\frac{G7}{B}$ $Cm7$

95 $Cm7$

99 $\frac{G7}{B}$ $Cm7$

D.S.

Ending $Cm7$

107 $Cm7$

111 $Cm7$

115 $Cm7$

119 $Cm7$