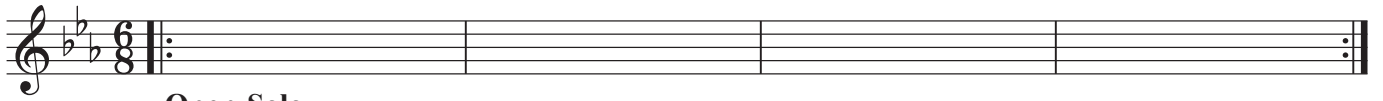


# RAIN OF ISRAEL

Fl

## Intro.

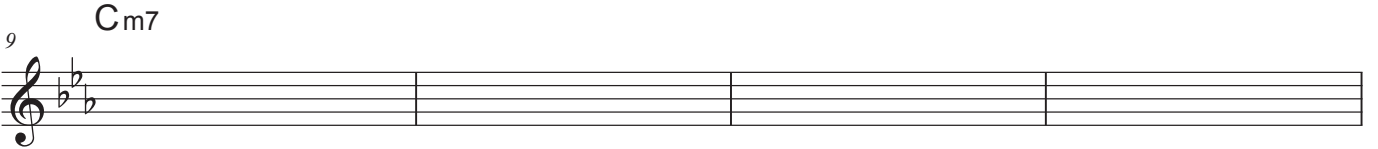
Bass in ~  
Cm7



Open-Solo



On Que Vln in ~



## A

Cm7



G7

B

Cm7



Cm7



G7

B

Cm7



## B Jazz waltz Swing

A $\flat$  $\Delta$ 7



E $\flat$

G

G $\flat$  $\Delta$ 7

D $\flat$  $\Delta$ 7

F



39 E $\Delta$ 7 Fm7 Fm Eb Dm7(b5) G7

43 C $\Delta$ 7 F $\Delta$ 7

47 C $\Delta$ 7 F $\Delta$ 7 D $\flat$  $\Delta$ 7 To Coda

**C** Open-Solo

Cm7 G7 B

57 Cm7 Cm7

63 G7 B Cm7

**Jazz waltz Swing**

67 A $\flat$  $\Delta$ 7 E $\flat$  G

71 G $\flat$  $\Delta$ 7 D $\flat$  $\Delta$ 7 F

75 E $\Delta$ 7 Fm7 Fm Eb Dm7(b5) G7

79 C $\Delta$ 7 F $\Delta$ 7

83 C $\Delta$ 7 F $\Delta$ 7 D $\flat$  $\Delta$ 7  
 ( Last time *mf* *mp* )

**D** Cm7

91 G7 B Cm7

95 Cm7

99 G7 B Cm7

*D.S.*

**Ending** Cm7

107 Cm7

111 Cm7

115 Cm7

119 Cm7